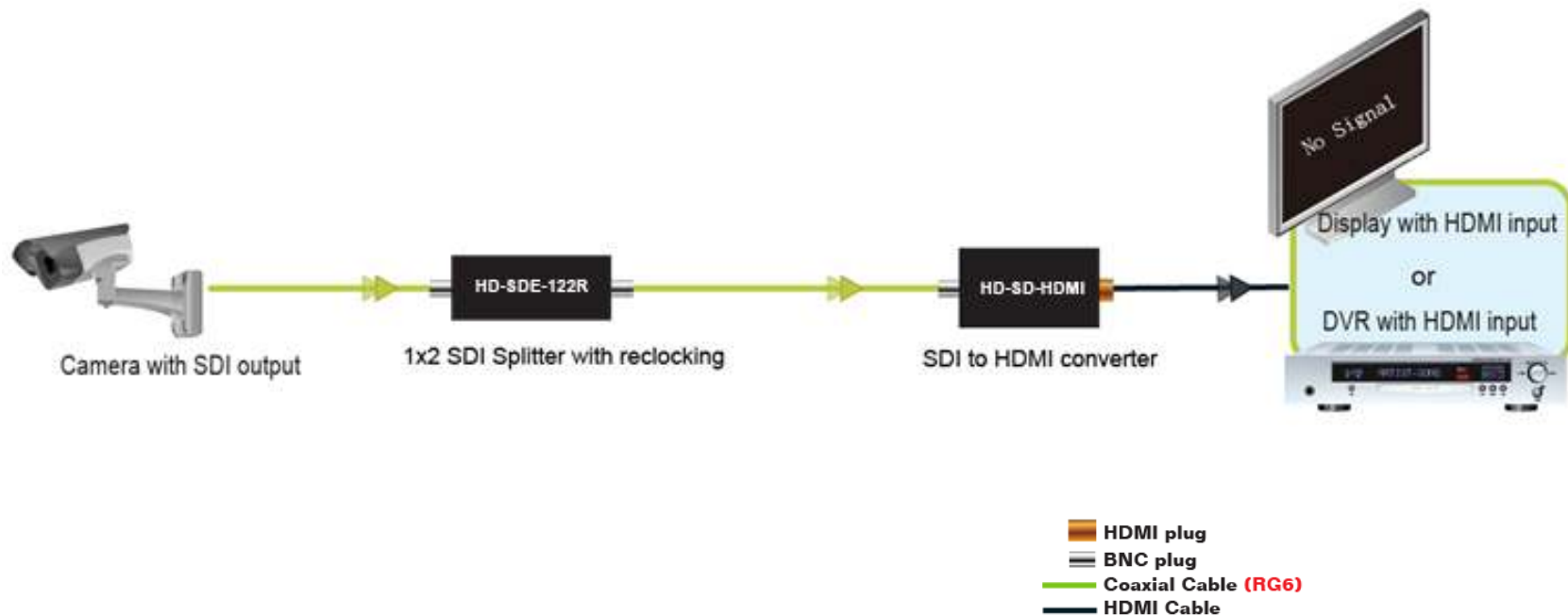


# During First Installation of the whole system

If no picture is showed on the screen

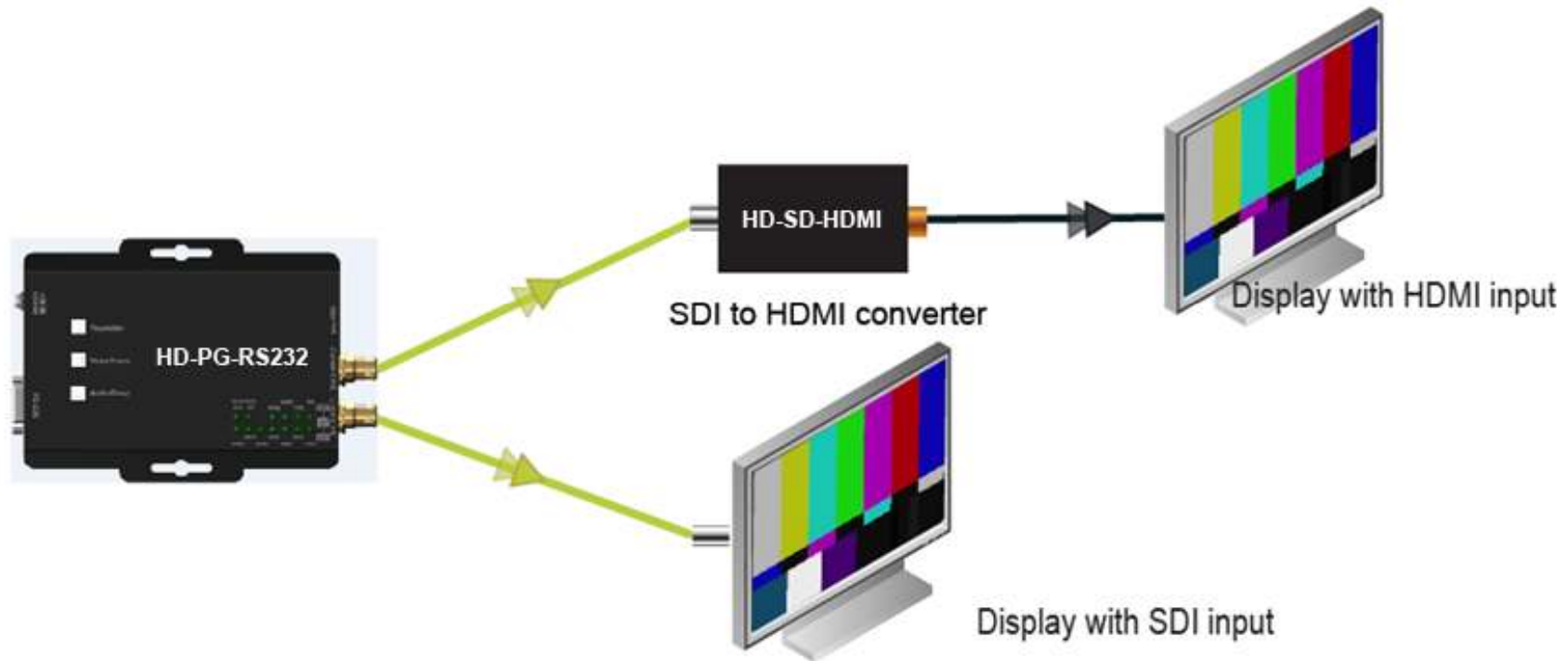


# Remove the Camera and change to HD-PG-HDMI or HD-PG-RS232



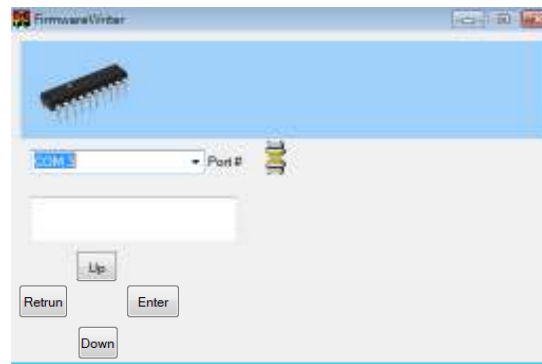
If pictures are showed on the screen, it means  
1. The SDI signal quality from Camera is bad.  
Or 2. The Camera is defective

# Connecting directly to Monitor to test the Monitor's quality

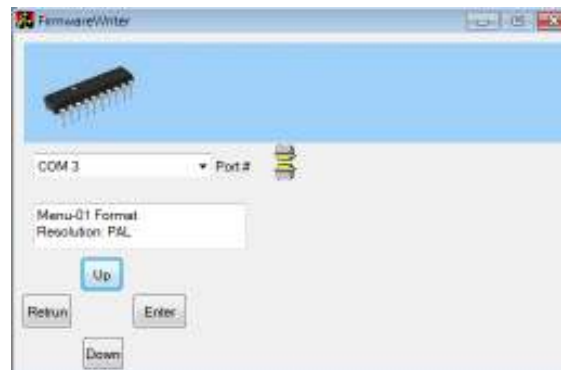


# How to send different pattern on KJY YD?

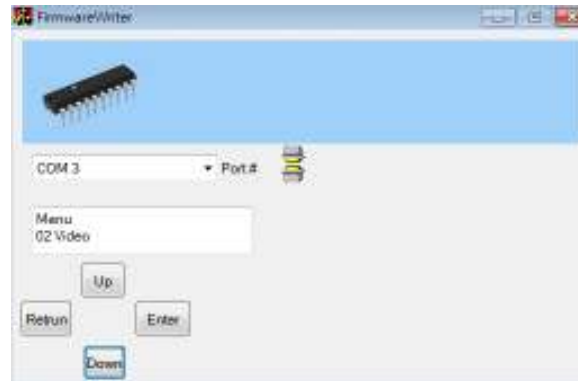
1. Connect the RS-232 to a PC and turn on the HD-PG-RS232
2. Open the software for HD-PG-RS232 , you should see the screen below



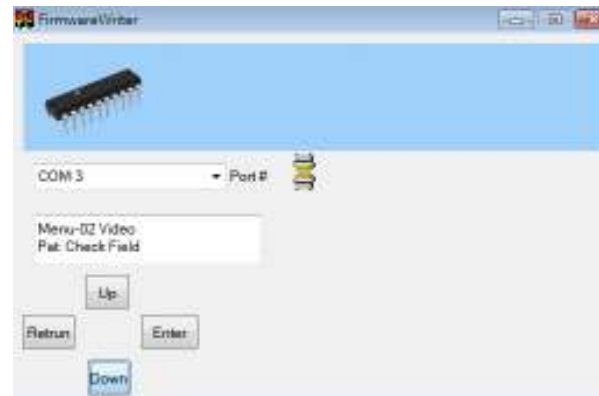
3. Please click the enter button and you will see information of what signal the device is sending, press up and down can switch resolution



4. Please click the return button until reach 01) Formation and press down to 02) Video



5. Press twice enter to Pat: SMPTE Bar\* then press up or down to choose the pattern you want, then press Enter again to send the pattern.



# The function of Patterns



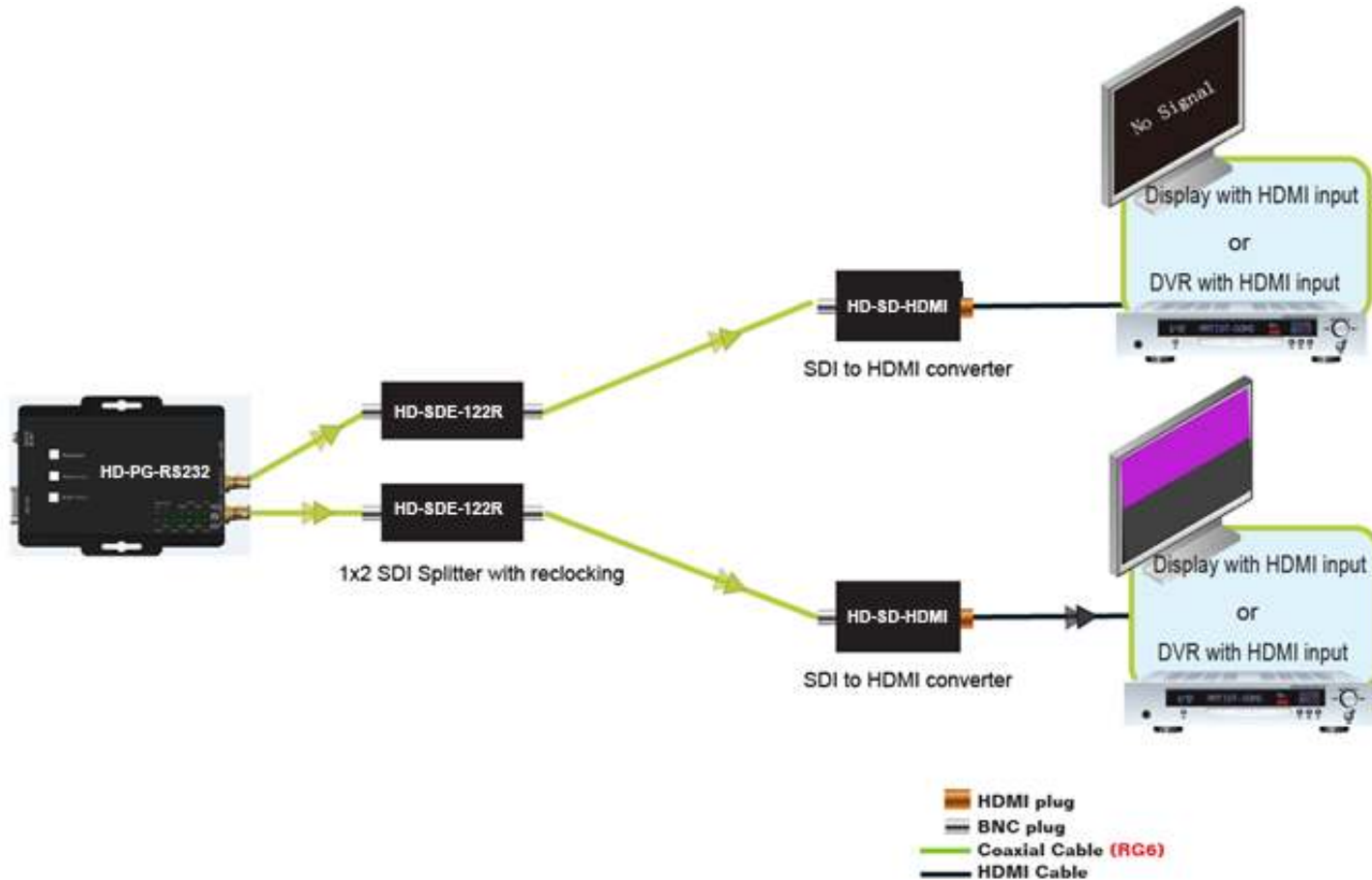
It's a SDI standard pattern, and the functional monitor should show the color bars correctly

# The function of the Patterns



These Pathological patterns are very important pattern for SDI signal, because these 2 colors reveal the worst SDI signal, if the repeater or converter don't perform well, the jitter will be very high (bad). Sometimes the pathological pattern causes the monitor fail to receive signal. Please see the rp178.pdf file for the detail.

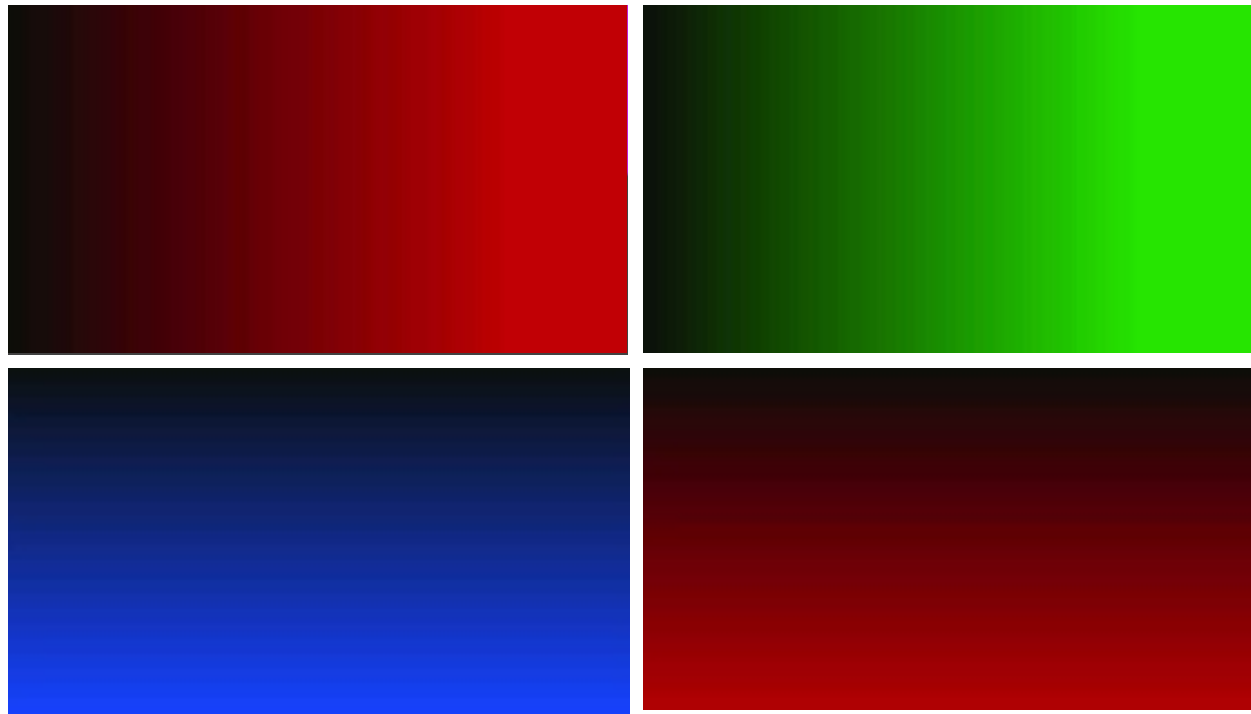
# The function of the Patterns



If no pictures are showed or blinking on the screen, it means:  
The bad quality SDI repeater generates signal with bad jitter/quality

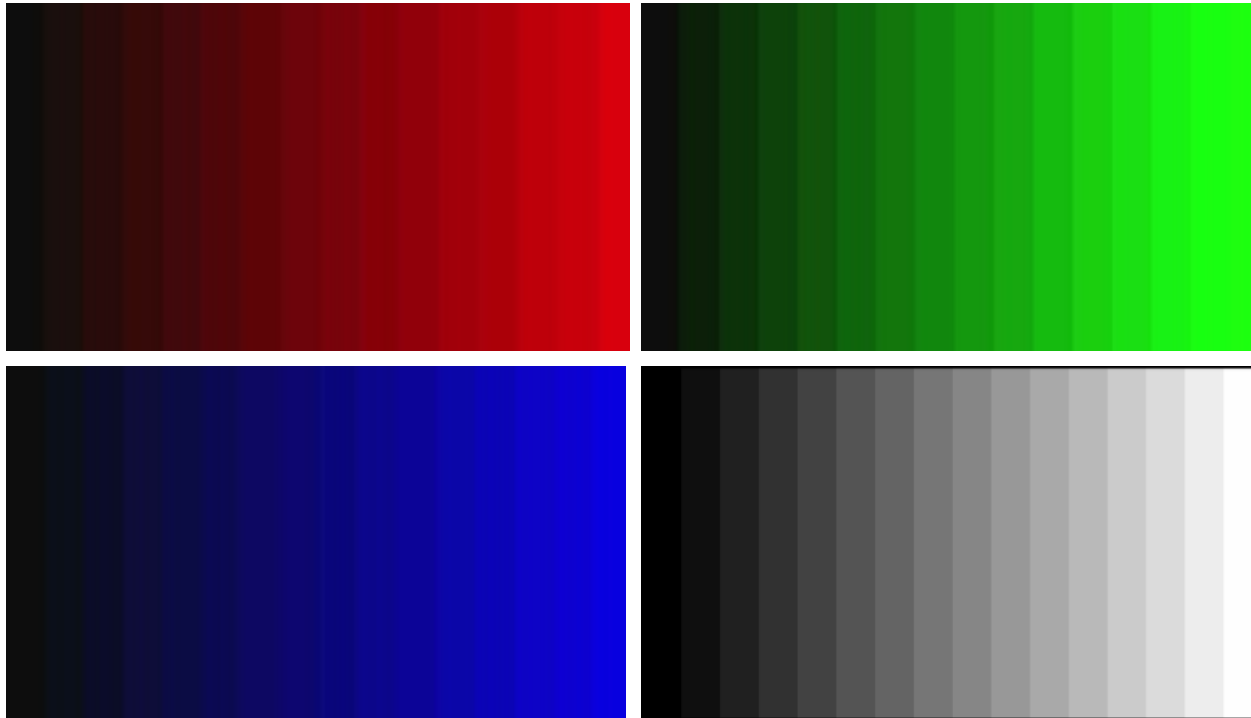


# The function of the Patterns



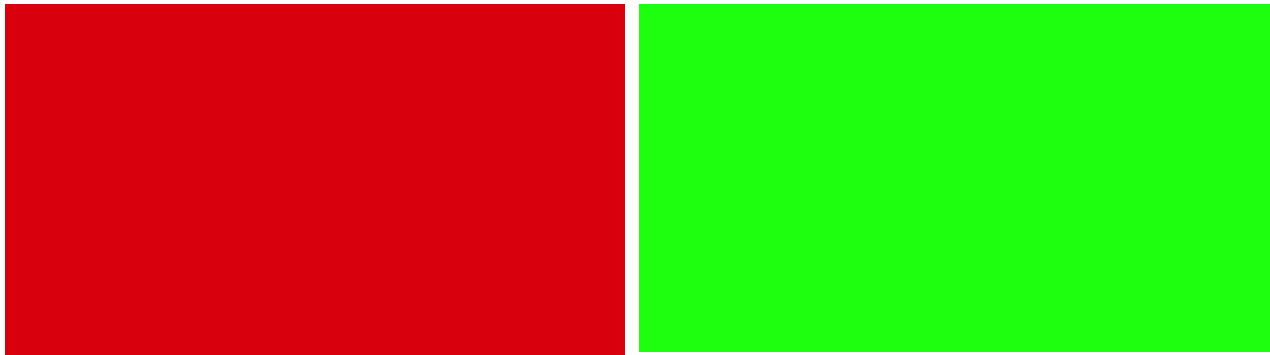
These patterns show if the monitor shows gradient color fluently

# The function of the Patterns



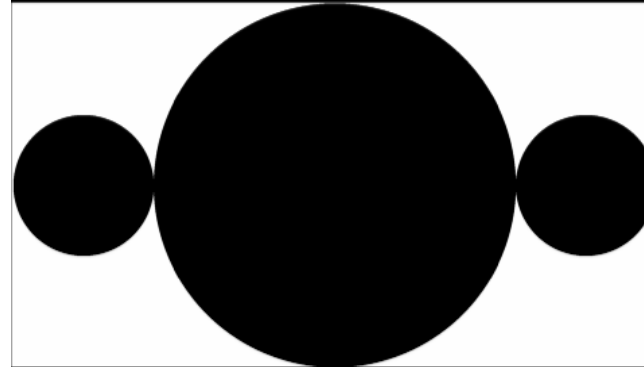
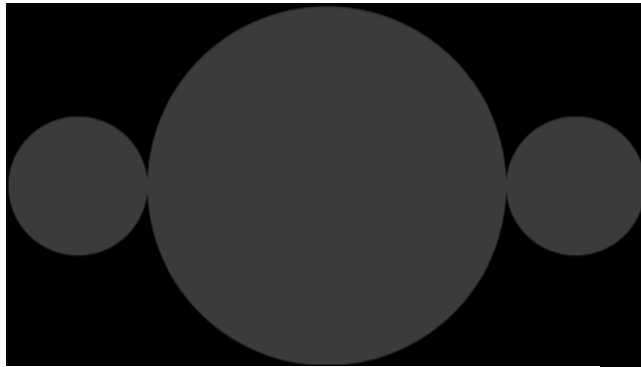
This patterns show wider range of RGB color, from 0 to 255, every bar should be seen clearly, if not, the ability of the monitor has weakness on the certain color. For example, I can not see the edge of the last 2 bars of green, that means the setting is wrong, or this monitor is incapable of managing green color. I could try to adjust the setting of this monitor until I can see the differences, but if I can't see the edge at all, then the problem is the monitor it self

# The function of the Patterns



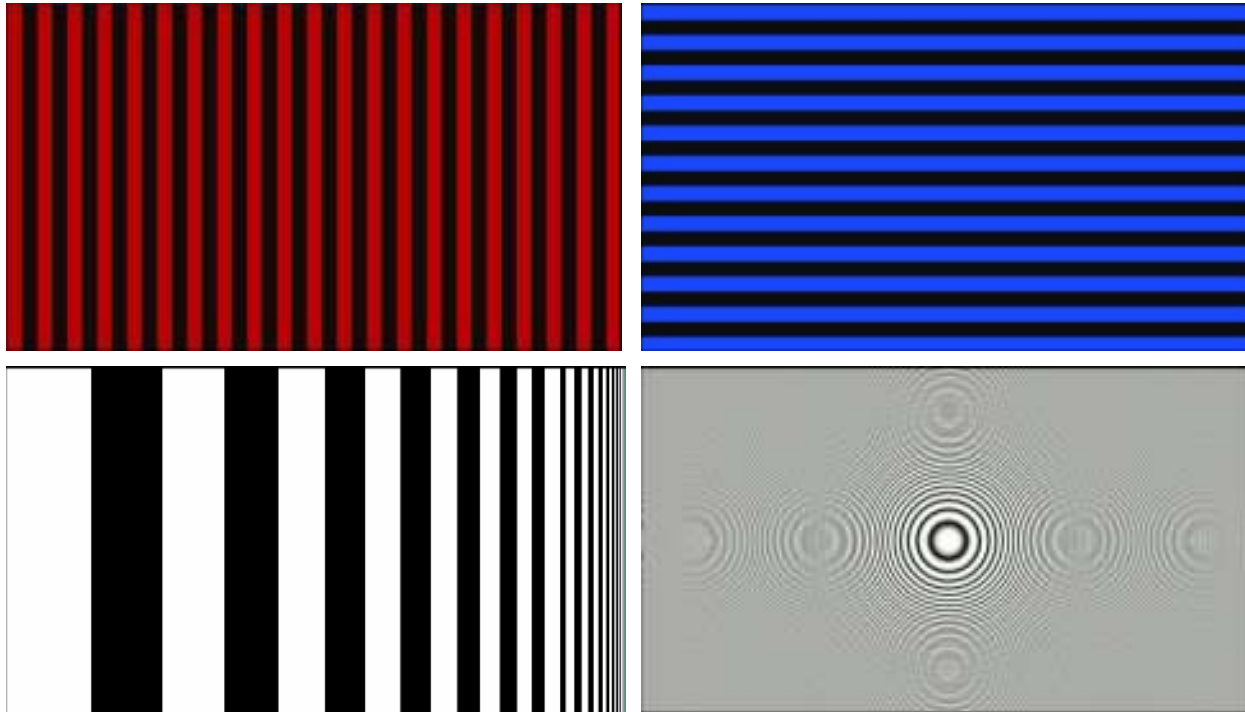
These patterns are only to let people check subjectively if the color looks ok.

# The function of the Patterns



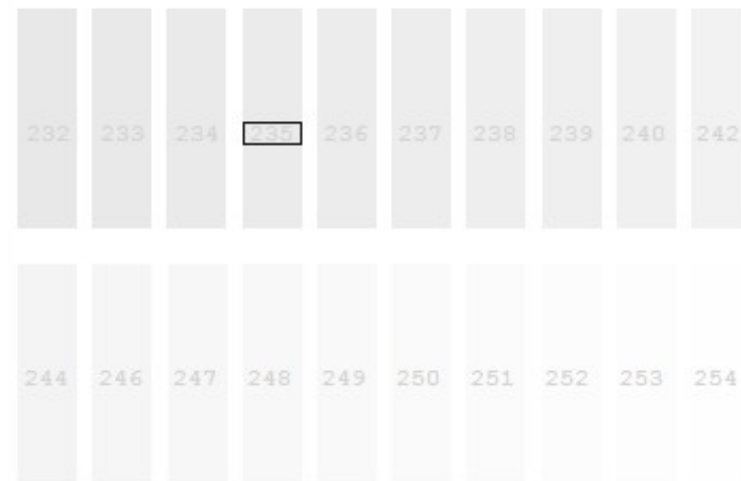
These patterns are generated to test if the ratio of monitor is correct, these pattern is for 16:9 monitor, and the 4:3 ratio pattern will be generated under NTSC mode

# The function of the Patterns



These patterns show the ability of the Scalar from the monitor, the bars should be clearly seen even when the bars are getting thinner, or sometime you can see zigzag forms at the edge where the color changes

# The function of the Patterns



These patterns shows if the monitor can show the detail differences of white and black. The number indicates the color saturation

# The function of the Patterns



The running square pattern show the monitor's ability to moving objects, sometimes the movement is not so fluent when receiving 3G signal.